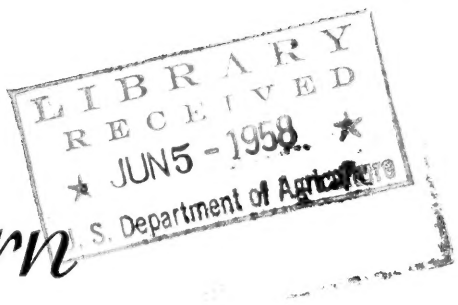


62

Ir



Modern

Hemerocallis

(DAYLILIES)



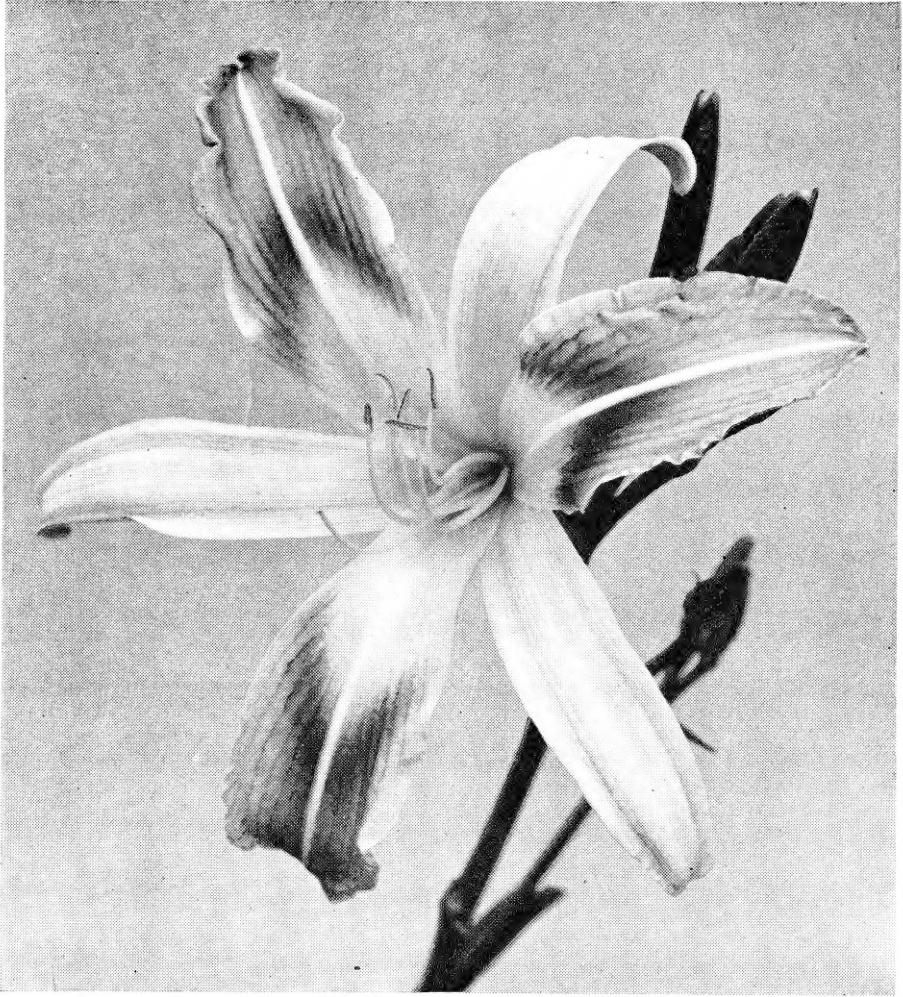
THE PERFECT SUMMER
PERENNIAL



* 1958 *

Hardy's Nursery

POST OFFICE BOX 126
MOUNT OLIVE, ALABAMA



MISS JESSIE (Hardy)

Foreword

We are fast approaching the most exciting and exhilarating time of the year for all who love Daylilies. Whenever the season of bloom is peak in your garden, I am sure you, along with me, limit other activities to enjoy "DAYLILY TIME." When the 1958 blooming season comes to your garden, I hope you will find my 1958 Catalogue an aid in your study of Daylilies, an incentive to grow some you do not have, and an inspiration to multiply your personal gardening pleasures by sharing.

We have worked systematically and diligently to acquire a fine representative collection of Daylilies; to grow them well; to choose and list in our Catalogue the best of the older ones and the most promising of the newer ones.

Our 1958 Catalogue offers, for the first time, an introduction of Mr. Willard A. King, of Bethesda, Maryland and his new Daylily, BAMBI. (Bambi is a seedling produced by Mr. James C. Stevens, of Greenville, New York. It was selected, purchased and registered by Mr. King.) Mr. King has been growing Daylilies for a number of years; he has a fine collection of named varieties, many beautiful seedlings of his own and a lovely garden in which to display them. His garden will be one of the gardens you will visit during the 1959 American Hemerocallis Convention in Washington, D. C. When you go—look for BAMBI. We are giving special emphasis in our Catalogue, to two Daylilies already introduced—EBONY PRINCE and FRANCES FAY. The special listing of these two Daylilies indicates our high regard for them and our hope that you will want to grow them. Hardy's Nursery offers two new ones—GOLD BOND and CALICO QUEEN. Both of these have received many favorable comments from garden visitors.

Again, you are invited to visit Hardy's Nursery and enjoy the Daylily season with us. The peak of the blooming season here is June 1-15. However, we welcome you anytime you find it convenient to honor us with your visit. A word of caution—There are two places called Mount Olive, in Alabama. We are located in the Mount Olive 15 miles north of Birmingham, Alabama. Our phone is not long distance from Birmingham and the number is HEMlock 6-3684. (The other Mount Olive is 60 miles south of Birmingham and although it is on the map, it has no Post Office.)

To the many gardeners who have favored us with orders, we say, "THANY YOU, again; remember us again." To those contemplating growing Daylilies we say, "Consider OUR Daylilies." To all Gardeners—our friends, we say, "A wonderful 1958 to you."

Mrs. W. T. Hardy

1958 *Introductions*

BAMBI (Stevens-King) M. 36" D. BAMBI is a red Daylily—but a different and unusual red Daylily. It is a light rose red, shining, radiant and with glowing iridescence. The flowers are medium size, the multiple branched scapes carry 25 to 32 buds. BAMBI is a good grower, a moderate increaser and makes a symmetrical garden clump. The color is absolutely sunfast and this characteristic is passed on to its progeny. We think, for growing Daylily seedlings, this variety will be most valuable for transmitting this nonfading characteristic in the class of red Daylilies. BAMBI is a charming Daylily, worthy of its garden space.

Net \$10.00



CALICO QUEEN (Hardy) EM. 30" D. Re. This bright bittersweet color is as outstanding as a young school girl in brilliant calico. The flowers are medium size, with well proportioned segments. The throat is green; there is a faint halo just a shade deeper in color than the remainder of the flower; a good grower; a good multiplier; definitely distinctive in the garden.

Net \$10.00



GOLD BOND (Hardy) M. 42" D. This variety has attracted attention since the first year it bloomed. The flowers are large, of leathery substance and are a complete self in light orange coloring. The throat is green. GOLD BOND withstands rain—is sun resistant. The scapes are heavy and erect with 25 or more buds. Named GOLD BOND because of its color and value.

Net \$10.00

Previous Introductions

MRS. W. T. HARDY—Hybridizer

BELINDA, a fresh looking pink that might also be placed in the melon class. It is from a cross of Afterglow and a very light pastel seedling; a mid-season and late mid-season bloomer, 30 inches tall and dormant. The flower is medium size and of heavy substance. This variety produces strong erect scapes with good branching. The foliage is narrow and slightly arched. We know there are not enough daylilies in this color class.

Net \$15.00



MISS JESSIE, a mid-season and late mid-season bloomer, is 40" tall and dormant. When this mauve-orchid bi-color blooms, we have nothing else of the same type in bloom. The flowers are large, wide open and of graceful form. Garden visitors have insisted that we name this and let them enjoy it also. So—here it is. The orchid petals are medium wide, the sepals are a clear yellow, very light, with no markings. The scapes are strong, well branched and carry up to 40 buds. It is a good grower, a moderate multiplier and an excellent pod parent. See inside front cover.

Net \$5.00



TICK TOCK, a gold miniature to go along with Ringlets, Lidice and Babette. The flowers are evenly placed and uniformly shaped and give a rhythmical effect to the clump—hence the name. This variety blooms mid-season to late. It is 26" tall and dormant. Small three inch flowers on stiff stems, gives the entire plant compactness. Be sure not to judge this one before it is two years old. The divisions are small. It is a good grower and a good multiplier.

Net \$1.00

Special Listing

FRANCES FAY

ORVILLE W. FAY—Hybridizer

FRANCES FAY was introduced by Hardy's Nursery in the 1957 year-book issue of the *American Hemerocallis Journal*. We think it important and fine enough to give it this special listing in our 1958 catalogue.

FRANCES FAY is a Daylily of beauty, distinction and of great worth for both the gardener and the hybridizer.

THE COLOR is a beautiful light melon pink pastel. The blooms are of very heavy substance and are more beautiful after a day in the sun. The large six-inch flower is a true self with a tiny green throat. The lightly ruffled petals are $1\frac{7}{8}$ inches wide, the sepals $1\frac{1}{4}$ inches wide.

THE SCAPES are 24" to 28", multiple branched with up to 35 buds per scape. It is ideal for a specimen foreground clump and perfect for a border planting.

THE BLOOMING PERIOD of Frances Fay (as recorded at Hardy's Nursery) is June 2nd to the first frost. For us, it is a continuous bloomer.

FRANCES FAY is a vigorous grower; a good increaser, proliferating occasionally; dormant; remains open in the evening.

FRANCES FAY received a Junior Citation in 1955 under the number 55-11 (Fay).

FLOWER GROWER, the *HOME GARDEN Magazine*, January, 1958 issue, page 52, listed Frances Fay in its directory of new plants for 1958.

We were very fortunate in being able to purchase all the stock of this variety from the outstanding hybridizer, Mr. Orville W. Fay. Mrs. Fay graciously allowed us to give it her name and so the lovely 55-11 was named for a lovely, gracious lady—FRANCES FAY.

Price—Net \$25.00



FRANCES FAY (Fay)

Special Listing

EBONY PRINCE

EARL J. HENSCH—Hybridizer

EBONY PRINCE is a five to six inch flower of heavy, excellent substance and velvet finish. It is a very dark maroon self with black velvet overlay. A full wide petaled flower opening in early morning on erect well branched scapes with 35 buds to a scape. It is classified as midseason to late, blooming to August 16th in Ohio and Oklahoma. Dormant.

In the *Hemerocallis Journal* Vol. 11, No. 3, July-August-September 1957, on page 11, EBONY PRINCE received this comment: "Beautiful EBONY PRINCE should be in every garden—a wonderful dark red!"

Stock Limited—Net \$10.00



JOIN

THE AMERICAN HEMEROCALLIS SOCIETY

The valuable yearbook and quarterly journals are worth many times more than the \$3.50 membership fee.

If you have NEVER been a member of the organization now known as the American Hemerocallis Society—

SEND: Membership fee of \$3.50 for one year to
Mrs. Daisy Ferrick, Sec.,
416 Arter Ave.
Topeka, Kansas

SEND: Membership number from your membership card to
us with your order for Daylilies from our 1958
Catalogue

RECEIVE: Daylily or Daylilies valued \$3 or more.

Heemerocallis...

.... THE PERFECT SUMMER PERENNIAL

KEY TO SYMBOLS

- | | |
|--|--|
| E—Early | Ev.—Evergreen; foliage remains green during winter. Please note, when temperature drops well below freezing, evergreen varieties have foliage killed, when the freeze subsides, they put forth new growth. |
| M—Midseason | |
| L—Late | |
| RE—Repeat bloomer | |
| OE—Open in the evening | |
| Numbers—height of scape | Semi-Ev. — are varieties that go dormant for a short time, then green the remainder of the year. |
| D—Dormant, the foliage disappears in winter. | |

DESCRIPTIVE LIST

- ALBATROSS** (Bach) M. 42" D. A fine very pale yellow with blooms of medium wide petals and wide open, very crimped and fluted. A good one in the color class of North Star.....\$ 4.00
- ALLAN-A-DALE** (Stout) M. 40" Semi-Ev. OE. This is an unusual shade of velvety dark rose, near carmine. A conspicuous white stripe extends from the throat to the tip of the petals. The petals are broad and overlapping. The scapes are strong and well branched. An excellent daylily.....\$ 1.00
- AMHERST** (Wheeler) M. 30" Ev. We have always considered this a distinctive daylily. It has large violet purple blooms with a cream midrib. Fifty-eight buds on well branched scapes\$ 1.00
- ARIADNE** (Emigholz) LM 40" D. OE. This daylily has been overlooked. It is seldom listed and not widely known—but it should be. The large 7½" flower has medium, narrow, spidery recurving segments of pale cream yellow. A two year clump makes a lovely show in the garden\$ 2.00

- ATEN** (Kraus) LM. 36" D. Large flowers, of extremely heavy substance, open widely on strong well branched stems. A late bloomer in the glistening orange color class. Once you have seen an established clump of this variety, you will want to grow it. Lovely planted with Pamela and Shimmer \$ 2.00
- ATHLONE** (Russell) M. 40" Ev. A large bicolor with petals of rose and chestnut brown, sepals are buff yellow. The form is interesting and distinctive. Excellent \$ 1.00
- ATLAS** (Kraus) M. 36" D. This daylily is large and bold, the coloring is light yellow with chartreuse shading. A wide petaled gigantic and beautiful flower. We consider this the finest of Dr. Kraus' yellow daylilies. Stock limited \$ 5.00
- BAILEY WALKER** (Wood) M. 34" D. This is a most distinctively colored daylily. The color is classed as cantaloupe or luscious melon but it contains what might be called a pink sub-substance which is more obvious after a day in the sun. It is both exquisite and distinctive. Stock limited **NET \$25.00**
- BESS ROSS** (Claar) M. 36" D. Re. This daylily is bold and striking in color, size and performance. The large, wide-open flowers are of a brilliant red, with coloring extending deep into the yellow throat which has a chartreuse green cup. This variety is a strong grower, a good multiplier and a good pod parent \$15.00
- BIRTHDAY CAKE** (Hall) M-L. 30"-36" D. A showy pastel of pastel pink and a light lavender blend with a green-gold throat. The medium size flowers are of heavy substance and very sun resistant. The scapes are heavy and erect; branching low and wide \$15.00
- BLACK FRIAR** (Lester) M. 40" D. OE. One of the finest dark daylilies we grow. The 6-inch blooms have the graceful form of Taruga. Almost black in the morning, changing to a deep red in the afternoon. Takes the hottest sun and remains open far into the night \$ 2.00
- CANYON PURPLE** (Nesmith) M-L. 45" D. A distinctive new break in color. Large full flowers of blue-purple with a deeper flush just above the pale lemon cup. Both petals and sepals are lightly ruffled at the tips. A self, even the stamens and pistil are purple. Strong stalks, good branching \$ 1.00
- CATHEDRAL TOWERS** (Milliken) EM. 30" Ev. RE. A soft rich yellow flower, boldly marked with red-brown pyramids on the petals, the same pattern being slightly traced on the sepals. Excellent substance and good growing habits \$ 1.00

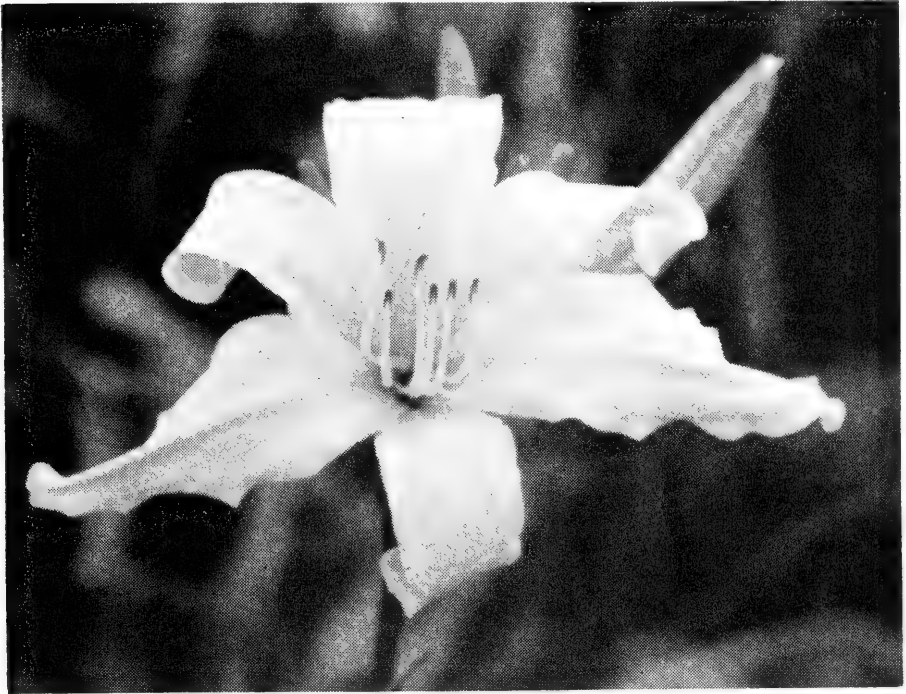
- CLUNY BROWN** (Taylor) E. 30" Ev. OE. Re. A brown and yellow bicolor of very heavy substance. This variety has excellent branching, and makes a contribution to the distinctiveness of any garden. It is really a collector's item. A slow multiplier, therefore, stock is scarce \$10.00
- COLONEL JOE** (Lester) EM. 40" D. OE. Named for Mr. J. W. House of Little Rock, Arkansas. A seven inch bloom of light lemon cream yellow. The petals are two inches wide with ruffled edges. The sepals recurve giving the bloom tri-angular form. Never fades and remains lovely at night \$ 5.00
- COLOR CARNIVAL** (Lester) E. 40" D. A large wide open flower of mauve rose with a two inch star shaped throat of lime green. An early bloomer and an excellent increaser. Well branched and sunproof \$ 1.00
- CORAL MIST** (Hall) M. 24" D. This daylily has broad petals and sepals. It is shell pink with the coloring deepening towards the center. It has a green cast at the base of the throat which adds to its attractiveness. One of the newer pinks you will certainly want to grow \$ 7.00
- COSETTE** (Milliken) M. 36" Ev. Re. Beautifully formed lily-like flowers of soft yellow with rosy dusting. The petals and sepals are both wide, creped and ruffled. The substance is heavy giving the blooms a wax like appearance. Valuable for its beauty and long season of blooms \$ 3.00
- CRADLE SONG** (Milliken) E. 30" Ev. Re. OE. This variety opens late in the afternoon and is good through the next day. It is a hybrid of High Noon with flowers as large as those of High Noon but on shorter scapes. The blooms are of medium yellow color, the form similar to High Noon but more informal. A good grower, multiplies rapidly and always blooms twice in Birmingham \$ 1.00
- CREAM PARFAIT** (J. P. Wood) M. 42" D. A cross of Devon Cream and Midwest Majesty and is the nearest true cream color we have seen. The blooms are large, with fluted edges and heavy substance. The flower is wide open. Excellent branching, a prolific bloomer and a fast increaser \$ 3.00
- CRIMSON GLORY** (Carpenter) M. 40" D. A smoothly finished red flower of fine substance and unusual coloring. A self with ruffled edges, vigorous grower and well branched. Really outstanding in the garden \$ 2.00

- DAAFU** (Claar) M. 24" D. Daafu is a lovely; clear rose-pink with a deeper rose halo. The sepals and petals are wide and recurved. The substance is good. This is excellent garden material for front of the border planting. If you are looking for low growing stalks and lovely flowers—this is IT \$ 5.00
- DAWN PINK** (Kraus) LM. 34" D. A good late rose colored Daylily that blooms when there are so few in the garden. Both sepals and petals are a clear rose self. Sunfast, strong spaces, well branched and a profuse bloomer. A good grower..... \$ 3.00
- DEVON CREAM** (Nesmith) M. 40" D. Few Hemerocallis have the thick heavy substance of this pale creamy yellow. Petals and sepals are both beautifully fluted on the edge. Strong sturdy stalks. An excellent Daylily \$ 1.00
- DOESKIN** (Nesmith) M. 36" D. Broad petaled full flowers of lightest yellow with finish, thickness and texture of doeskin. Sturdy, well branched scapes with many flowers \$ 1.00
- DONATION** (Lester) EM. 24" Ev. Re. This is a very hardy evergreen. Excellent for the front of the border. Donation has large 6 inch blooms of medium yellow with a faint tint of rose on the edge of the petals. It is one of the parents of Lady Bountiful; A fast increaser important for its second period of blooming. This variety was named DONATION because Mrs. Lester gave it away several years ago \$ 1.00
- DUCAT** (Dennett) LM. 28" D. Re. Large Deep golden self; Excellent form and substance: Blooms twice; liked by everyone \$ 1.00
- EASTER SUNRISE** (Schmelzer) M. 34" D. The form of this daylily is most distinctive, resembling a Dutch Amaryllis. The petals are broad, have fluted edges, and are distinctly creped. The flowers are wide open. The base color is beige, this appears to have an overlay of peach tint. The petals have a wide near white midrib. The entire flower is classified as diamond dusted. An excellent grower and performer \$ 5.00
- EBONY PRINCE** (Hensch) See page six.
- FAIRY JEWELS** (Nesmith) L. 46" D. This variety has medium sized flowers of shrimp pink with color extending to the center of the bloom. Splendid branching when established. Many branches re-branch. You will like this late bloomer \$ 1.00

- FAIRY WINGS** (Lester) EM. 30"-36" D. A truly fairylike flower of waxlike substance. Both sepals and petals are edged with tiny ruffles. The sepals recurve and the petals are placed like the wings of a butterfly poised for flight. The background color is pale yellow with a delicate tint of pink light in the center of the petal. A cool green throat lights up the flower. Wonderful branching with buds that are green until the flower is open\$10.00
- FAR NORTH** (Nesmith) M-L. 48" D. Far North is a large flowered light yellow hemerocallis blooming past the peak of the daylily blooming season. The stalks are strong and sturdy; the large flowers are of heavy substance\$ 1.00
- FIFTIETH ANNIVERSARY** (Stout) M. 36" D. This day lily is not very well known, and not often listed. It is a slow multiplier, we have never had it to give more than two increases a year. However, if you are looking for a very stunning daylily—this is it. The color is a bronze and dark red over orange, but one is not very conscious of the orange. There is a darker marking of oxblood red just above the greenish orange throat. It is a full five inch flower, the substance excellent and the scapes strong and well branched. In established clumps, it is truly outstandingNET \$ 3.00
- FOND CARESS** (Milliken) EM. 34" Ev. OE. A fragrant pale cream yellow daylily with wide segments and open form. It is of low compact growth making it excellent for the front of the border. Remains open far into the night. One of Mr. Milliken's very best and too little known\$ 1.00
- FORTYNINER** (Ferrick) M. 34" D. A beautiful daylily, well named. It is a brilliant gold with overlapping fluted petals. Strong scapes and good branching. A good grower and a fast multiplier\$ 3.00
- FRANCES FAY** (Fay) See page four.
- FRIAR TUCK** (Lester) EM. 30" D. OE. People will say there are enough yellows with dark eyezones—but not like this one. Deep rich yellow with a mahogany eye zone and a velvet finish. Its real value is in its unfading quality, re-blooming habit and loveliness at night\$ 1.00
- GENE WILD** (Lester) E. 30" Ev. Re. A very early bloomer of giant size. Wide heavy subenced petals and sepals that are ruffled and recurved. The color is a soft peach yellow with a hint of lilac in the light eyezone. The velvet finish gives this daylily a richness seldom seen in a daylily. This fine creation was named for Gene Wild of Sarcoxie, Missouri. Evergreen but hardy. Stock limitedNET \$10.00

- GOLDEN ORCHID** (Dennett) M. 36" D. Blooms are large, deep orange and beautiful in form and color. It is liked by all who see it. A good grower but not a fast multiplier\$ 2.00
- GOLDENSONG** (Kraus) M. 30" D. Large, heavily ruffled and creped. Golden yellow. Sturdy plants covered with large golden bells\$ 1.00
- GOLDEN TRIANGLE** (USDA) M. 40" D. Large 6 inch flat triangular shaped flowers of heavy substance and full sun resistant. Buttercup yellow self a little lighter at the edges. Fragrant\$ 3.00
- GREEN GODDESS** (House) M. 36" D. This superb daylily is a cool yellow with a really green throat. The petals are broad, the flowers are large, the substance excellent. The foliage is a handsome blue-green. Truly, a striking daylily\$15.00
- GRISELLE** (Saxton) M. 36" Ev. Re. A round flower of glowing rose, veined carmine. The petals are wide and overlapping. Most valuable for its second season of blooms when blooms are most needed in the garden\$ 1.00
- HARRIET MANN** (Taylor) EM. 42" Ev. A Holly Berry red with good carrying power due to its luminous quality; well branched and a good bloomer. With adequate water, we get a second season of blooms\$ 1.00
- HAWTHORN ROSE** (Bach) M. 34" D. A different colored day-lily—a rosy purple blended with blue and deep lavender. Many medium size flowers making a colorful clump in a short time. The flower form is round, the substance, good. This variety is a good grower\$ 5.00
- HOWDY** (Bremkin-Armstrong) M. 36" D. Everyone wants this one. A striking bi-color, the petals are distinctly purple, the sepals a very light yellow. Excellent grower, a good multiplier. The blooms are medium large, the divisions are small\$ 1.00
- IMPERIAL BLUSH** (Hall) E-M. 34" D. Broad, overlapping petals and sepals of shell pink which lightens as the day brightens. The flowers are slightly ruffled, and wide spread. The substance is heavy. A pleasing pastel for specimen planting. Useful in blending colors in the garden\$10.00
- INVITATION** (Kraus) M. 34" D. Large blooms of Azalea pink. The flowers are flaring in form and have excellent substance. Sturdy scapes and vigorous grower\$ 5.00

IVORY CHALICE (Nesmith) M. 40" D. Full medium sized flowers of very pale yellow. Heavy substance, wide petals, lightly ruffled, lovely as a cut flower or garden specimen.....\$ 2.00



JACK FROST

JACK FROST (Lester) ML 30" D. A cool pale daylily that looks like lemon ice. The petals and sepals are very thick in the center and get thinner to almost a sheer at the edge. The recurving sepals give it a distinctive triangular form. The flower, when well grown, measures 6-7 inches and is a delight to behold\$ 5.00

JEWELL RUSSELL (Russell) M. 36" Ev. An excellent Daylily, moderately priced. The large 7-inch blooms are a soft pale lemon yellow, with all segments of the bloom the same color. The petals are somewhat recurved giving an interesting triangular look to the form of the flower. The foliage is unusually dark green\$ 1.00

KINDLY LIGHT (Bectold) M. 30" D. An immense bloom with twisted petals and slightly ruffled edges. A light yellow with a hint of green. The form classed as spidery is unusual and distinctive\$ 2.00

- LADY BOUNTIFUL** (Lester) E. 40" D. A large soft yellow that blooms very early. Has a faint pink tint on the edges of the petals on cool days. Well branched with as many as 50 buds on a scape in established clumps. A favorite with all who see it and grow it\$ 1.00
- LEMON LUSTRE** (Lester) ML. 40" D. OE. Here is a satin finished cool lemon yellow that blooms well whether the weather is right or not. Wide over lapping petals; a 6-inch flower with sweet perfume. Remains open after dark\$ 1.00
- LIDICE** (Traub) E. 36" Ev. A medium size orange, suffused red. This variety is a multiflora type with a long blooming season. It is a very hardy type of evergreen. You are sure to like it. Not as well known as it should beNET \$.50
- LIMELIGHT** (Lester) M. 36" D. This is not a green flower; it is a lemon yellow with a green throat. A seven inch bloom with wide petals of procelain substance. A well established plant will have up to 40 buds to a scape, often with several open at once. Very slow to increase\$10.00
- LOCHINVAR** (Taylor) E. 34" Ev. Re. The brilliant scarlet red flowers of this variety makes it a "show clump" in the garden. The flower is large, wide open and has wide petals. The excellent substance of the flowers gives them a wax-like appearance. This variety is a good grower and a good multiplier\$ 1.00
- MAGIC DAWN** (Hall) ML. 36" D. Re. One of the best of the newer pink Daylilies from Mr. David Hall. The medium size blooms are of a vibrant rose pink color, are ruffled and of heavy substance. The flowers lighten in the sun but do not bleach or burn. The scapes are heavy, erect and well branched. This variety may be relied upon for a good re-blooming season. A favorite with all who see it\$12.00
- MARGUERITE FULLER** (Kraus) LM. 40" D. This variety, being a late mid-season bloomer adds fresh interest to the garden after the peak of the blooming season. The blooms are very large and of a very pale-chartreuse-yellow color. The petals are long and ruffled. The foliage a beautiful dark green\$ 5.00
- MARIONETTE** (Lester) ML. 36" D. OE. A five inch bloom of buttercup yellow. It has a rich mahogany band about a half inch wide across the petals and sepals near the throat. Has never been known to fade. One of the most striking day-lilies we grow\$ 1.00

- MEADOWSWEET** (Taylor) M-L 36" Ev. A large wide spread flower of lavender rose with a hint of blue. Smooth texture and heavy substance. Of multiflora habit with excellent branching; when established it is a stand out in the garden \$ 5.00
- MEDALLION** (Saxton) M. 30" D. Large 5½ inch flowers of tangerine orange flushed light Indian orange. The petals are round and over lap and measure up to 2½ inches wide. A different daylily! \$ 1.00
- MICHELLE** (Ferrick) M. 34" D. Large full flowers of water melon-rose, both petals and sepals the same color with the color deepening a bit near the throat. A strong grower, often making proliferations on every stem \$ 3.00
- MIDWEST STAR** (H. P. Sass) M. 48" Ev. One of the finest large pale yellow daylilies. Wide slightly ruffled petals of good substance. Do not fail to grow this one \$ 2.00
- MIMOSA ROSE** (Lester) EM. 30" D. This too, was named because of many requests from those who had tried it. It was long known as 9-46. Has nice wide petals, recurved at the tips. Fine substance and sun-proof quality. Blooms several times a season, even in the north. Five inch blooms of a lovely coral rose color. It has better branching after it is established \$ 1.00
- MORPHEUS** (Sass-Stump) ML 40" D. Large flowers of lemon yellow with a porcelain finish. Slightly ruffled and recurved. Sunfast and open in the evening. Important for its late blooming period, beginning two weeks after HESPERUS begins. MORPHEUS has been called an improved Hesperus..... \$ 1.00
- MRS. H. M. RUSSELL** (Russell) M. 36" Semi-Ev. This is a gladolius-flowered daylily. The buff yellow is 4 inches across. It is a clean looking, formal shaped distinctive bloom. The scapes are stiff and erect. It is known to have 2 or 3 blooming periods \$10.00
- NARANJA** (Wheeler) EM. 36" Ev. A choice and popular daylily. A clean clear deep orange, a self, even deep into the throat. Naranja opens perfectly and has a beautiful form. The flowers, when well grown, have a spread of 7 inches; the ruffled petals are 1⅞ inches wide. Good stalks well branched \$ 1.00

NEYRON ROSE (Kraus) M. 36" D. Bright Neyron rose (British Horticultural chart) with slightly darker veins and a cream band on the edge of each petal. Here is a brilliant rose pink daylily for your garden. We wish we had more stock of it..... \$ 5.00

NIGHT HAWK (Fay) LM. 38" D .OE. A very large wide petaled ivory self of ivory texture. The flower is wide open with reflexed and curled petals and sepals. It is an evening bloomer which stays open all night and all the next day. Does not fade until the new flowers open in the evening. The flowers are carried on strong straight scapes. Fertile both ways. Stock limitedNET \$ 7.00

NINA REBMAN (Kraus) M. 30" D. This is a lovely blend of apricot, melon and pink. The overall color is that of a ripe cantaloupe. An excellent grower, a free bloomer and a good multiplier. The blooms are medium large with reflexed petals. This variety is in the color class with RUTH LEHMAN, but more reasonably priced because of its ability to increase rapidly \$ 5.00

PAINTED LADY (Russell) EM. 36" Ev. This popular variety has large flowers, as much as nine inches across, when well grown; sepals and petals heavily ruffled; the color is deep yellow overcast with cinnamon with darker veins in both petals and sepals and a still darker eyezone. A profuse bloomer \$ 1.00

PAMELA (Kraus) LM. 40" D. An excellent flower with wide flaring and broad petals of buttercup yellow. The substance is excellent; the scapes sturdy and well branched; The plant a vigorous grower. This variety should be in every collection... \$ 1.00

PICTURE (Lester) M. 40" D. OE. A 6 inch bloom of a lovely bright rose pink. Petals and sepals are the same shade with the pink going down into a light yellow throat with deep green at the bottom. Petals are more than 1½ inches wide; sepals are 1 inch. Sunproof and remains open long after dark. It is still pink when put under an electric light. This is a good test. The form is a bit on the trumpet side, flaring out wide at the top. Good branching \$ 5.00

PINK BOWKNOT (Taylor E. 42" Ev. A lovely luscious salmon pink with a heavy ivory mid-rib and a light creamy yellow throat. The triangular form and heavy substance are distinctive characteristics \$ 2.00

PINK DAMASK (Stevens) M. 36" D. This clear rose pink is well branched. It is a good grower, a good multiplier and a good bloomer. Very popular \$ 1.00

- PINK SONG** (Hall) M. 30" D. This pink is more rose in color. It is of good substance and the medium sized flowers are lightly ruffled. A clump makes a colorful spot in the garden.....\$ 7.00
- PORT ROYAL** (Lester) LM. 38" D. One of the brightest flowers in our collection. The color is neither salmon or rose but nearer Bittersweet on the color chart. It becomes more rose when the plant is established. Two or more blooms will open at once on the same scape, a rapid increaser and an excellent garden subject \$ 1.00
- POWDER PUFF** (Lester) M. 40" D. A 6 inch flower that is hard to describe. A pastel yellow with slight tints of pink, that grows pinker by the end of the day. By afternoon the color is what is called flesh colored face powder. Prettier at night than when it opened\$ 2.00
- PREMIER** (Hall) M. 36" D. An excellent red Daylily with broad petals and sepals. The substance is good, the scapes strong and well branched. Stock limited \$15.00
- PRIMA DONNA** (Taylor) M. 36" Ev. Large peach colored flowers with superior substance. A lovely pastel blend that is sun resistant and has a long flowering period. Excellent parent \$ 3.00
- RAVEN** (Wheeler) M. 36" Ev. Re. This variety has interesting coloring of a deep wine red with a black overlay. The beautiful chartreuse throat makes a vivid contrast. The flowers are large and the scapes well branched \$ 1.00
- REVELRY** (Lester) EM. 30" D. Re. A five to six inch bloom that is a true cardinal red. The petals and sepals recurve. The soft leathery flowers appear on wide branched scapes and never stop coming up until winter comes. The throat is so small that the spot of light green is almost unseen.....\$ 3.00
- REVOLUTE** (H. P. Sass) M. 43" D. One of the finest cool light yellow self daylilies that we grow. We never have enough stock of this one. Large blooms on stately well branched scapes \$ 2.00
- RINGLETS** (Kraus) M. 30"-36" D. This is a dear! Liked by all who see it and loved by those who grow it. The flowers are small, creped, curly and perfectly formed. The color is a bright golden yellow—just right. 35 or more buds on well branched scapes. A wonderful flower for arrangements or corsages. We call it a "perfect miniature"\$ 3.00

- ROYAL PURPLE** (Kraus) LM. 32" D. A glowing pansy purple veined deeper purple without any mahogany tones. For a different daylily—for hybridizing purples you should not miss this one. Stock limited \$ 3.00
- RUFFLED PINAFORE** (Milliken) 30" Ev. A flower of classic beauty. Apricot yellow with wide over lapping segments. The petals are creped and crinkled and a slight halo appears above a small green throat \$ 3.00
- RUTH LEHMAN** (Kraus) M. 36" D. This variety is a luscious melon pink. A pastel of heavy substance, stately stalks, well branched and well proportioned. The flower is large, the petals are wide. It is everything you would want—except, it is a slow multiplier. We only count on one increase a year from this variety, though sometimes we get two. This variety will not be shipped until the week of September 4th, 1958, at which time, all orders accepted for it will be shipped. Stock limited **NET \$15.00**
- SALADIN** (Stevens) M. 38" D. Wide open recurved blooms of dark red. Medium sized flowers of a satin finish. A self red that holds exceptionally well in the sun and remains open in the evening. Do not overlook this one \$ 1.00
- SHIMMER** (Kraus) LM. 30" D. A buttercup yellow with a glistening sheen. A chartreuse throat adds to its attractiveness. Plant this one with Pamela \$ 1.00
- SHOW GIRL** (Wheeler) M. 38" Ev. Re. A soft orchid with rosy veining. Wide ruffled, reflexed segments. The flowers are large and handsome. The scapes are well branched. This variety performs well in partial shade \$ 1.00
- SIDE SHOW** (Russell) E. 30" Ev. Re. A magnificent buff yellow with extremely wide petals. It blooms three times in Birmingham, Ala. At the second and third blooming period the flowers have a tendency to come double. Use this one in your border \$ 1.00
- SILVER STARS** (Russell) M. 36" D. An excellent variety with large flaring and twisted bloom segments of very pale green yellow. Many buds on well branched scapes. The divisions grow small and grassy. We never have enough of this one..... \$ 2.00
- SPOTLIGHT** (Lester) E. 50" Semi-Ev. OE. A broad petaled flower of extremely heavy substance. It is a creamy yellow, liked by all who see it and grow it. It is a strong grower with large divisions that look like palmetto fans in a clump. It is a very slow multiplier \$ 2.00

- SPRING FANTASY** (Lester) E. 38" D. One of the earliest to bloom. A large bi-color with petals of lilac and sepals of pure light yellow with no brushing of lilac on them. This is a complete bi-color and one you will always want \$ 2.00
- SUNSTAR** (Lester) M. 36"-40" D. A deep chrome or near gold color with a green throat and as bright as sunshine. The long narrow petals and sepals recurving place this one in the spider type. Both petals and sepals have excellent substance which enables this flower to take the hot sun all day. It makes a splendid show with several large blooms open at the same time on a single scape \$ 3.00
- SWANSDOWN** (Hall) M. 38" D. This is a beautiful light yellow Daylily. The coloring is so light that from a distance it appears near white. The petals are 2 inches broad, the sepals are medium wide. It has strong stems and good branching. The substance is good and the flower holds well in the sun..... \$10.00
- SWEET MYSTERY** (Lester) EM. 36" D. This one is difficult to describe. It is a blending of blush pink and light yellow with the pink becoming a deeper shade as the sun gets hotter. The tint of pink in the stamens and the deeper rose in the pistil add much to the beauty of this flower. The petals are slightly ruffled and all six segments recurve at the tip. When well fed and watered, it produces many large proliferations. A fascinating and choice daylily! \$ 5.00
- SWEET REFRAIN** (Hall) M. 30" D. A medium toned pink which is almost a self; the color is excellent in the sun; good branching; vigorous grower; small divisions making it valuable for border planting; the blooms are between medium and large size; lovely when established \$10.00
- TA MING** (Nesmith) M. 36" D. Mrs. Nesmith says of this flower, "Rarely does one see a Hemerocallis with more perfect form and finish," and we certainly agree with her. The full buff orange flowers have evenly fluted edges on both petals and sepals. The exterior of the buds are very attractive with green tips in contrast with the brilliant orange \$ 1.00
- TEMPLE BELLS** (Hall) M. 30" D. A full funnel shaped flower with wide overlapping petals of crepe-like texture. The color is that of a muskmelon. The scapes are erect and well branched. An excellent pod parent. A lovely front of the border plant \$20.00
- THE CHAMP** (Russell) M. 36" D. A huge pale yellow with a faint shadow of a halo. The petals are wide. The scapes well branched. It is well liked \$ 1.00

THE SULTAN (Nesmith) M. 36" D. A very deep red with a nice velvet finish. It has a small deeper inconspicuous eyezone above a small yellow throat. Broad petals and beautifully formed. Be sure to see this one on a two year old plant..... \$ 1.00

THISTLEDOWN (Nesmith) M. 36" D. This is one of the best of the evening bloomers. The flowers open about five P.M. and last well through the next day. This cool and refreshing



TRUE CHARM (Fay)

- flower should always be placed in areas used for evening entertainment. This wide petaled flower is wide flaring and of a very pale cream yellow. The petals and sepals are ruffled and are carried on strong well branched scapes. This is one of the very few fragrant varieties\$ 2.00
- TOP BRASS** (Lester) M. 34" D. A strong grower with heavy, well branched scapes. The flower is 5 inches and golden orange with a faint rose eye-zone. The petals are wide and ruffled. A two year clump grown in full sun, will be outstanding in the garden\$ 5.00
- TRUE CHARM** (Fay) M. 40" D. This is a very large maize colored flower. The color is a self with no throat marking and no halo or eye. The heavy substance is appreciated in this 7 inch flower of grace and charm. A favorite with garden visitors\$ 7.00
- VELVET BUTTERCUP** (Schmelzer) M. 40" D. We consider this daylily one of the best from this hybridizer. The blooms are very large, with leather like substance; they are full and beautifully formed; the color is pure buttercup yellow. The divisions are large and the foliage attractive\$ 3.00
- WINDSOR TAN** (Nesmith) M. 34" D. A bi-color of windsor tan and buff yellow. The petals are broad and the substance good. A wonderful show when established\$ 1.00
- YELLOWSTONE** (Kraus) M. 36" D. A large wide open free flowering yellow. Wide petals, beautifully creped and ruffled. Very fragrant. It has been called an improved Hyperion.....\$ 1.00

MAKE YOUR OWN COLLECTION—NO. 1

60c each or . .	{	—3 of one kind	\$ 1.20
	{	—6 of one kind	\$ 2.00
	{	—any 10	\$ 5.00
	{	—100 plants, our selection of 20 or more varieties	\$25.00

VARIETIES NOT MARKED EV. ARE DORMANT

AURANTIACA MAJOR (Specie) E. Ev. Re. Large, showy, deep gold bloomer.

AU REVOIR (McDade) L. Small, buff and gold, profuse bloomer; excellent.

AUTUMN RED (Nesmith) L. Large red blooms—a good Daylily.

AUTUMN DAFFODIL (Kraus) L. Very small yellow blooms in profusion. Try this.

BABETTE (Hayward) E. Ev. Re. A classic orange—should be in every garden.

BLITHESOME (Nesmith) M. Large medium yellow-showy—excellent.

BOLD COURTIER (Nesmith) M. Wide petals of rosy red, good substance. A striking variety.

CABALLERO (Stout) M. A most popular bi-color of maure-rose and yellow.

CONSTANCE (Hill) M. Re. Red toned blend—unusually large flowers—constant bloomer.

DAUNTLESS (Stout) M. Pastel buff blend. Large flowers. Liked by all. Fragrant.

DOROTHEA (Lester) M. A beautiful pastel of lilac, heliotrope and cream colors. Tops.

EARLY BIRD (Lester) E. Re. Ev. Magnificent variety for deep south. Pale cream yellow.

- FAIR FORTUNE** (Lester) M. Spider type—chrome color—good.
- FAREWELL** (McDade) L. Yellow-gold with excellent branching. Valuable for late season.
- GALAHAD** (Lester) E. Ev. Re. Black red—showy. Open in evening.
- GARDEN CHARM** (Bechtold) M. Mellow yellow evening bloomer. Charming.
- GAY TROUBADOUR** (Nesmith) M. Unusual red and yellow bi-color, large-distinctive.
- GLORY** (Bechtold) M. Immense and magnificent yellow. Outstanding.
- GOLIATH** (Bechtold) M. L. Re. Large yellow blooms.
- HONEY REDHEAD** (Nesmith) M. Bright red with cream yellow border.
- JEAN LA FITTE** (Claar) M. Very dark garnet velvet. With green throat.
- KNIGHTHOOD** (Schroeder) M. Rich moroon red with cream midline. Large-striking.
- LIBBY FINCH** (House) M. Purple-red with a white line through petals. Distinctive.
- LILLIAN RUSSELL** (Russell) M. Ev. Creamy yellow overcast rose-lavender. Large showy flowers.
- MAN O'WAR** (Taylor) M. Ev. Large, wide petaled red velvet. Excellent.
- MARCO POLO** (Lester) M. Large Chinese red flowers with velvet finish. Fine.
- MINUTE MAN** (Lester) M. Six-inch blooms of black-red with green throat.
- MONTE** (Russell) M-L Low growing, rose-brown and light yellow bi-color.
- MOROCCO RED** (Nesmith) M-L. A morocco red self—showy in clump.
- MRS. LEROY ROGERS** (Lester) M. Ev. Re. Large golden yellow bloomers. Excellent in south.
- MY LUCKY STAR** (Lester) M. Excellent landscaping variety — large deep gold blooms.

- BEACH BLUSH** (Lester) E. Ev. Strong grower with large graceful blooms of peach coloring.
- PERSIAN PRINCESS** (Nesmith) M. Impressive dark red overcast purple. Plant near a light color.
- PETER PAN** (Stevens) E. Brightest, best, early red. Medium flowers on multi-branched scapes.
- PHOEBUS** (Lester) L. Re. Large flowers, spider type, of deep orange. Distinctive.
- PLUM MIST** (Claar) E. Plum color with velvet finish. Showy when established.
- PORT** (Stout) M. Bright orange red—good branching—many blooms—low grower.
- PURPLE FINCH** (Nesmith) M. Glowing red with red-purple in throat. Makes beautiful clump.
- ROYALTY** (Nesmith) M. Dark, black red with velvet finish. Plant with light colors.
- SEÑORITA** (Lester) E. Ev. A most brilliant red velvet. Popular.
- SINGAPORE** (Bechtold) E. Excellent early light yellow. Blooms when blooms are scarce.
- SONATA** (McDade) L. Cool, pastel, light creamy yellow. Evening bloomer.
- STARLIGHT** (Nesmith) E. Ev. A fine early pale yellow—large blooms—good grower.
- SU-LIN** (Nesmith) M. Lavender and yellow pastel bi-color. Beautiful in shade.
- TARUGA** (Stout) M. A classic green-yellow. 6-7 inch graceful bloom. Tops!
- WHEELER HALO** (Wheeler) M. Ev. Interesting chrome for evening arrangements.

MAKE YOUR OWN COLLECTION—NO. 2

6 Daylilies, one of a kind, your selection from \$1 varieties\$ 5.00

MAKE YOUR OWN COLLECTION—NO. 3

6 Daylilies, one of a kind, your selection from \$2 varieties\$10.00

Use any combination of varieties from collections No. 1, No. 2, and No. 3

MAKE YOUR OWN COLLECTION—NO. 4

to make up a \$10 collection. For example:

5.....\$.60 each for \$ 2.50

3.....\$1.00 each for \$ 2.50

3.....\$2.00 each for \$ 5.00

Total \$10.00



Catalogue prices of collections apply only to

MAIL ORDER DELIVERY.

Plants marked NET may not be purchased in collections.

All collections are NET.

DAYLILY CULTURE

Hemerocallis (Daylilies) are now the most important and preferred summer perennial. If you garden, once you grow a daylily—you will always grow DAYLILIES. The desire to acquire an excellent collection of daylilies may be attributed to the followings: (1) There are so many beautiful colors, different forms, types, sizes and seasons of blooms; (2) The culture of the daylily is simple. It might be summed in one short sentence: Give the daylily ample garden space, good garden soil, several light feedings a year and adequate water at blooming time. (3) The daylily is practically disease free. (4) The daylily, once planted, becomes an excellent investment, increasing in beauty and value each year—decreasing in maintenance cost.

WHEN should daylilies be planted? The general answer would be, anytime the ground is not frozen and you do not anticipate a freeze for 30 days. We prefer to plant them from April 1st to November 1st. However, those south of us will lengthen this transplanting period; north of us, the period will be shortened.

HOW should daylilies be planted? Plant shallow, is the most important suggestion. One inch of soil over the spread out roots is sufficient for spring planting, two inches when planted in the fall. Be sure to water well when first planted, then, give adequate water to keep in good growing condition. For immediate display, plant 1½ feet apart, at the end of the second blooming season, remove every other plant, transplanting these to a new location. The remaining plants will then be approximately three feet apart and may be left undisturbed as long as the clumps produce representative flowers.

WHERE should daylilies be planted? If the soil is properly prepared, anywhere except in dense shade. Suggested locations are: Flower bed borders; perennial flower beds; rock gardens; low hedges, in front of foundation plantings; around the patio; near pools; accent plants near gates and entrances; use on terraces; use on banks and in washes to prevent erosion; plant with other garden subjects; plant alone in display beds.

WHAT type of soil is best for daylilies? Any type of soil is suitable for daylilies as long as it is well drained. We have grown them in clay, sand, loam, ashes and in varying combinations of all these. They will thrive in soil that is either acid or alkaline. It is the condition of the soil that is most important. Clay should be conditioned with sand or sifted ashes. All types of soil need plenty of humus which may be added in the form of peat, manure and compost. If you do not now maintain a compost bed—begin one. It is a necessity for good gardening.

WHAT Kind of fertilizer does the daylily require? Any well balanced fertilizer in which the nitrogen is not too high. Suggested are: 5-10-5; 0-14-14; daylilies prefer several light feedings to one heavy feeding. We have found liquid fertilizer gives excellent results—just follow the directions on the package.

WHAT kind of mulch is best? Almost any material that will not become soggy is usable. We have used pine straw, excelsior, leaves, peanut hulls, straw, rotted sawdust, compost, manure, peat sphagnum moss and ground corn cobs. But DO mulch. It protects in winter and prevents evaporation in summer. And mulching is always an aid in the control of weeds.



CATALOGUE COMMENT

We know all who receive this catalogue are not interested in Daylilies. If you want this catalogue, we are most happy for you to have it. If you DO NOT want or need this copy, will you PLEASE give it to someone interested in Daylilies?



FROM MY GARDEN NOTE BOOK

To most of you, my Catalogue is my voice to you. I take this section for communication with you, to give little items of interest concerning Daylilies, and, to pass on to you, ideas and information I think worth your consideration.

* * * * *

There is always a rush to get plants in the spring, when the weather is cold—freezing—warm—raining—and then the same thing over again. Late spring transplanting is preferable to early spring transplanting because the plants are larger, grow faster and gardening is more pleasant in pleasant weather.

* * * * *

Some few spring transplanted varieties will bloom, but the blooms will be inferior. Really the spring transplant should not be allowed to bloom. First, for the good of the plant; second, for your good. You could form a dislike for a lovely flower—so—wait and give it a chance to be lovely.

A bed of yellow Daylilies is always lovely. The important point in a seasonal display (all varieties blooming at the same time) is to arrange the varieties according to height, low ones to the front, tall ones to the back. The following makes a good combination:

SIDE SHOW, CRADLE SONG, LITTLE CHERUB, BABETTE and STARLIGHT. Plant them near or around a clump of Tycoon Siberian Iris.

* * * * *

CLUNY BROWN, a very slow multiplier, is well worth the time it requires to make a clump. Its excellent branching is evident on a first year scape.

* * * * *

Spacing Daylilies depends upon the individual purpose of the planting:

1. For immediate effect, plant Daylilies 18 inches apart and place a second planting of Daylilies two feet to the front of spaces left in first planting. Remove every other clump the third year.
2. For permanent planting (5 years) allow a minimum of three feet between plants. Four feet would be better. While the Daylilies are making clumps, interplant with Daisies and annuals.

* * * * *

Send Daylilies for Gifts. They will be appreciated for years to come.

* * * * *

I quote from the 1956 Catalogue, two paragraphs, because I know of no better way to say the same thing:

Have you ever gone into your garden in the early morning and watched the daylilies open? If you have not, you have missed a treat, If you have done so, here is a question for you. AT WHAT TIME OF DAY DO YOU CONSIDER THE FLOWER AT PERFECTION PEAK? The flower is different every hour of the day! So much is said about flowers fading that we would like to go on record as follows: Since the flower varies every hour, or perhaps every fifteen minutes with the sun, if at the end of the day it has not wilted, melted, curled, burned or bleached, the degree of variation in color from morning to evening should not be called fading—but shading. The same sun will lighten the coloring of PINK BOWKNOT and will deepen the coloring of SWEET MYSTERY. Both are lovelier at the end of the day.

If you are just beginning to grow daylilies, purchase daylilies \$3 or less until you have at least 25 varieties. Many excellent daylilies are reasonably priced. DAUNTLESS or TARUGA well grown would be worth \$25 if only a few were available. The high price tag often indicates the quality of the daylily, but not always; in most cases it does indicate the amount of stock available.

INDEX OF HYBRIDIZERS
and
**OUR 1958 CATALOGUE LISTING OF THEIR
INTRODUCTIONS**

- | | |
|--|--|
| <p>BACH, MRS. WM. R.
Albatross
Hawthorn Rose</p> <p>BECHTOLD, LeMOINE J.
Garden Charm
Glory
Goliath
Kindly Light</p> <p>BREMKIN, J. J. &
ARMSTRONG, MRS. FLOYD D.
Howdy</p> <p>CARPENTER, CARL
Crimson Glory</p> <p>CLAAR, ELMER A.
Bess Ross
Daafu
Jean LaFitte
Plum Mist</p> <p>DENNETT, CHAS. N.
Ducat
Golden Orchid</p> <p>EMIGHOLZ, MRS. J. F.
Ariadne</p> <p>FAY, ORVILLE W.
Frances Fay
Night Hawk
True Charm</p> <p>FERRICK, MRS. DAISY L.
Forty-Niner
Michelle</p> <p>HALL, DAVID F.
Birthday Cake
Coral Mist
Imperial Blush
Premier
Swansdown
Sweet Refrain
Temple Bells</p> | <p>HARDY, MRS. W. T.
Belinda
Calico Queen
Gold Bond
Miss Jessie
Tick Tock</p> <p>HAYWARD, WYNDHAM
Babette</p> <p>HENSCH, EARL J.
Ebony Prince</p> <p>HILL, H. M.
Constance</p> <p>HOUSE, J. W.
Green Goddess
Libby Finch</p> <p>KING, WILLARD A.
Bambi</p> <p>KRAUS, DR. E. J.
Atlas
Aten
Autumn Daffodil
Dawn Pink
Golden Song
Invitation
Marguerite Fuller
Neyron Rose
Nina Rebman
Pamela
Ringlets
Royal Purple
Ruth Lehman
Shimmer
Yellowstone</p> <p>LESTER, MRS. HUGH W.
Black Friar
Colonel Joe
Color Carnival
Donation
Dorothea</p> |
|--|--|

Early Bird
Fair Fortune
Fairy Wings
Friar Tuck
Galahad
Gene Wild
Jack Frost
Lady Bountiful
Lemon Lustre
Limelight
Marionette
Marco Polo
Mimosa Rose
Minute Man
Mrs. Leroy Rogers
My Lucky Star
Peach Blush
Phoebus
Picture
Port Royal
Powder Puff
Revelry
Senorita
Spring Fantasy
Sunstar
Sweet Mystery
Top Brass

MILLIKEN, CARL S.
Cathedral Towers
Cosette
Cradle Song
Fond Caress
Ruffled Pinafore

McDADE, CLINT
Au Revoir
Farewell
Sonata

NESMITH, MRS. THOMAS J.
Autumn Red
Blithesome
Bold Courtier
Canyon Purple
Devon Cream
Fairy Jewels
Far North
Gay Troubadour
Honey Redhead
Ivory Chalice

Morocco Red
Persian Princess
Purple Finch
Royalty
Starlight
Su-Lin
Ta Ming
The Sultan
Thistledown
Windsor Tan

RUSSELL, HUGH M.
Athlone
Jewel Russell
Lillian Russell
Monte
Mrs. Hugh Johnson
Mrs. H. M. Russell
Painted Lady
Side Show
Silver Stars
The Champ

SASS, HANS P.
Midwest Star
Morpheus
Revolute

SAXTON, STANLEY E.
Griselle
Medallion

SCHMELZER, MRS. HAZEL E.
Easter Sunrise
Velvet Buttercup

SCHROEDER, RALPH M.
Knighthood

STEVENS, JAMES C.
Bambi
Peter Pan
Pink Damask
Saladin

STOUT, DR. A. B.
Allen-A-Dale
Caballero
Dauntless
Fiftieth Anniversary
Port
Taruga

TAYLOR, MRS. BRIGHT H.

Cluny Brown
Harriet Mann
Lochinvar
Man O'War
Meadowsweet
Pink Bowknot
Prima Donna

TRAUB, H. P. (USDA)

Golden Triangle
Lidice

WHEELER, RALPH W.

Amherst
Naranja
Raven
Ruby Supreme
Show Girl
Wheeler Halo

WOOD, J. P.

Cream Parfait

REPEAT BLOOMERS

Aurantiaca Major
Babette
Calico Queen
Cathedral Towers
Cluny Brown
Constance
Cosette
Cradle Song
Donation
Ducat

Early Bird
Frances Fay
Gene Wild
Griselle
Goliath
Hayette Mann
Marionette
Mrs. Leroy Rogers
Phoebus
Revelry
Show Girl
Side Show
Spotlight

OPEN IN EVENING

Allan-A-Dale
Ariadne
Black Friar
Cluny Brown
Colonel Joe
Cradle Song
Fond Caress
Frances Fay
Friar Tuck
Ivory Chalice
Lemon Lustre
Marionette
Night Hawk
Picture
Ringlets
Thistledown
Velvet Buttercup



A Kraus trio: SHIMMER, PAMELA and ATEN. The third year they are magnificent.

* * * * *

A Sass trio: REVOLUTE, MIDWEST STAR and MORPHEUS.

* * * * *
* * * * *

SUNSTAR—very worthy. Allow space for a large display clump. This variety must be seen in a three year clump to be really appreciated.

* * * * *

BLACK FRIAR, an outstanding dark Daylily, is lovely next to PORT ROYAL.

GARDEN NOTES

TERMS AND INSTRUCTIONS

SHIPPING SEASON

Fall shipping begins August 1st and continues to November 1st. Those who live north of us will certainly want their plants in August and September. We have found the middle of September and October the best transplanting time for the south and we suggest that if you live in this area, that you allow us to ship your plants during this period.

ORDER EARLY

We have an excellent stock of daylilies to back this catalogue. However, the stock of many of the newer varieties is somewhat limited, in view of the demand for them. We suggest that **YOU ORDER EARLY**. This is advantageous to both shipper and purchaser. Every effort will be made to fill orders in sequence received.

We do not ship recently transplanted plants.

GUARANTEE

A state Etomologist Certificate is attached to every shipment. We ship freshly dug plants, blooming size plants, properly packed to reach you in good condition. All stock is guaranteed true to name, if error should occur, replacement or refund will be made promptly. In no case shall our liability be more than the original cost of the plant.

TERMS

Full remittance should accompany any orders. For your own protection, do not send cash or stamps. A personal check or a Postal Money Order is much safer. No C. O. D. shipments will be made. Due to large size of our plants and the increase in postage rates the minimum order accepted is \$5. All orders will be shipped prepaid parcel post.

FREE PLANTS

In appreciation of your business, we send a gift plant with every order. Our selection is based upon the size of your order, stock supply and your suggestions. We recognize a gift dayliiy loses its value if we duplicate something you already have, so do not fail to mention several from which we may choose. In sending gift plants this year, collections and the varieties marked **NET** will not be used as a basis for gift plants.



FAIRY WINGS (Lester)